

The drawing consists of two parts: a longitudinal section (SEZIONE A-A) and a cross-section (SEZIONE B-B).

**SEZIONE A-A (Longitudinal Section):** This section shows the slab's profile with a width of 300 cm. It includes reinforcement bars with diameters of 14, 16, and 18 mm. Key features include:
 

- Top reinforcement: 14/16/20 L=136 (C26), 14/16/20 L=99 (C25), and 14/16/20 L=133 (C26).
- Bottom reinforcement: 14/16/20 L=119 (C22), 14/16/20 L=118 (C24), and 14/16/20 L=129 (C23).
- Electrodeposition note: "rete elettrolitica #5/20x20".
- Labels for "LATO ESTERNO" (outside) and "LATO INTERNO" (inside).

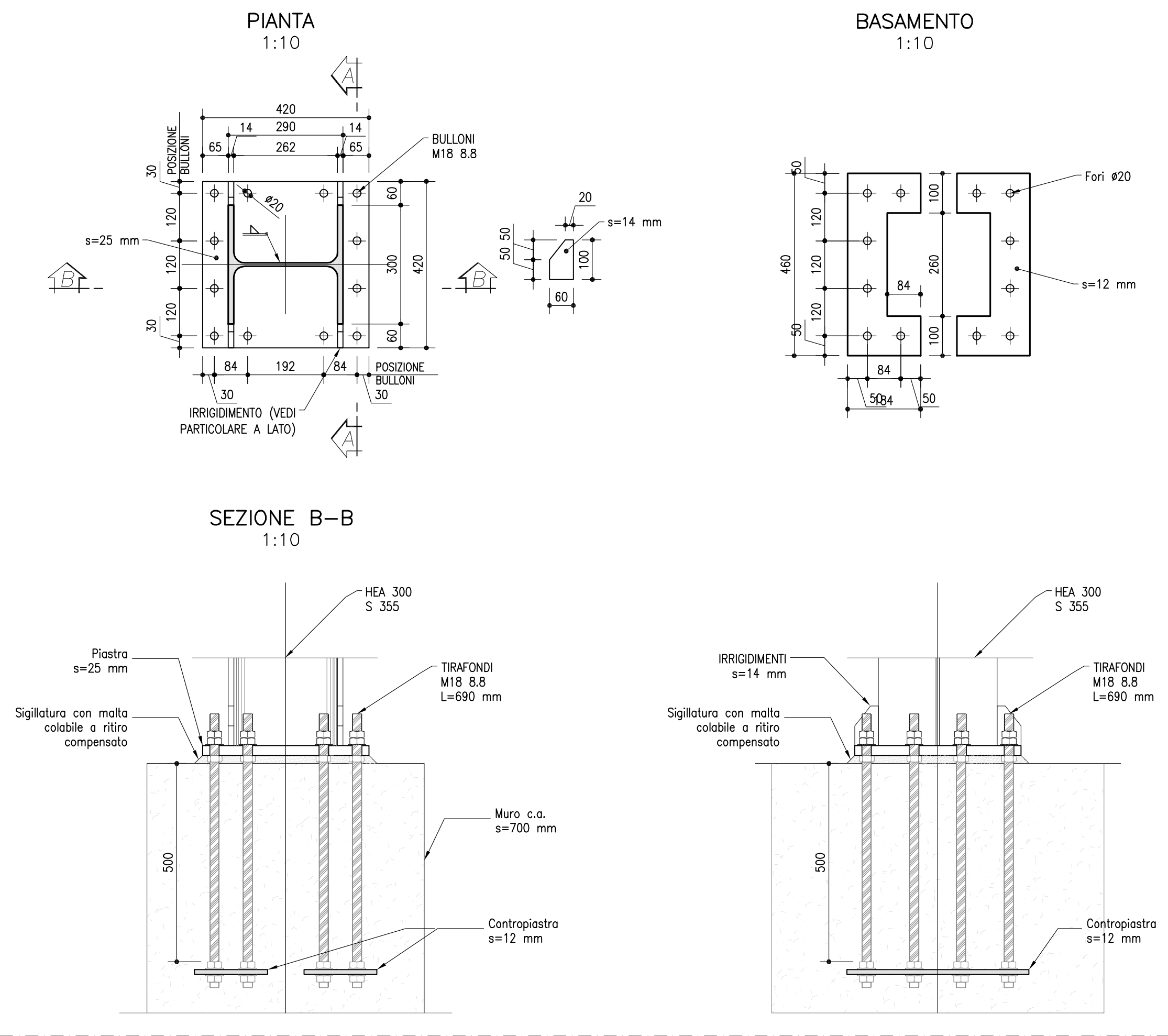
**SEZIONE B-B (Cross-Section):** This section shows the slab's profile with a width of 300 cm. It includes reinforcement bars with diameters of 14, 16, and 18 mm. Key features include:
 

- Top reinforcement: 14/16/20 L=500 (C27), 14/16/20 L=500 (C24), 14/16/20 L=500 (C23), and 14/16/20 L=500 (C23).
- Bottom reinforcement: 14/16/20 L=500 (C26), 14/16/20 L=500 (C25), 14/16/20 L=500 (C24), and 14/16/20 L=500 (C23).
- Labels for "SEZIONE B-B" and "SCALA 1:50".
- Labels for "ARMATURE DI CHIUSURA" (closure reinforcement) and "3x16 L=250 (C21)".

**SEZIONE A-A**  
SCALA 1:50

**SEZIONE B-B**  
SCALA 1:50

**ANNALE DI CHIUSURA**

[illegible][illegible][illegible]

PRESENTE DOCUMENTO NON POSSA ESSERE COPIATO, RIPRODOTTO O ALTAMENTE PUBBLICATO, IN TUTTO O IN PARTE, SENZA IL CONSENSO SCRITTO DELLA SOC. ALBERGHI PER L'ESM. S.P.A. CON UTELLO NON AUTORIZZATO SARK PERSEI